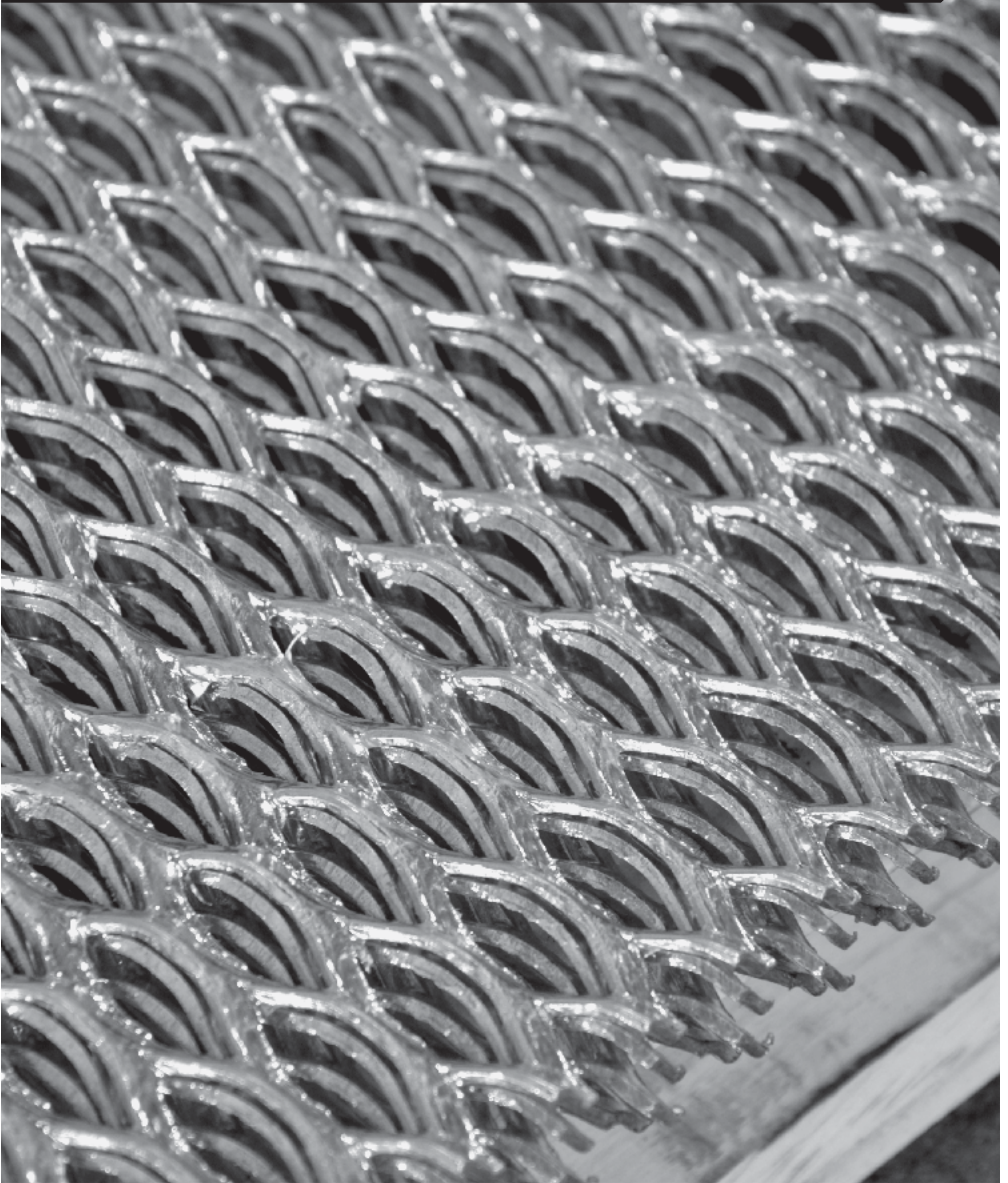
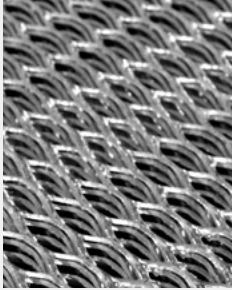


Manufactured Products



Manufactured Products



Grid Mesh

Product Shortname: GRID

Gridmesh:

Gridmesh is a single sheet of steel that has been slit and expanded into a network of uniform shaped openings. As a result Gridmesh has a distinctive pattern that is both decorative and strong. It is tough and durable with a high strength to weight ratio.

The GR series are relatively open meshes for general purpose jobs whilst the GM series have smaller mesh apertures for heavy duty jobs.

The steel used in all cases is low carbon steel 3.2mm or 5mm thick. It is available black or galvanised and can be readily welded.

Applications:

Walkways, ramps, stairtreads, work platforms, vehicle ramps, gratings and floorings.

On the farm it can be used for stock crates, sheep races and woolshed floorings. For piggeries, it can be supplied in a flattened form for farrowing and weaner applications, along with the standard Gridmesh for fully grown animals.

It can be attractive as well as functional when used for security and decorative grills, sunscreens and dividers.

Important:

When ordering GRIDMESH, note that the LWM long way of mesh is at right angles to the length of the sheet.

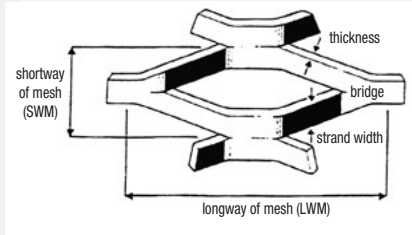
e.g. sheet size 3000 x 1200 LWM runs across the 1200 dimension.

Also note that when used on a ramp or a walkway, the mesh must span the gap in the LWM direction. Only when laid in this way, will the mesh have maximum rigidity. It should also be fastened every 4th mesh or approximately 150mm centres, and have at least 25mm overlap onto the supports.

Most sizes are also available in hot dipped galvanized.

Manufactured Products

Grid Mesh



Sizes Available:

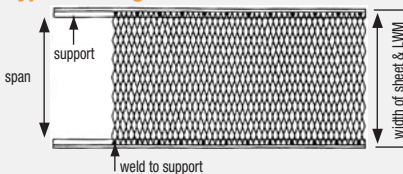
MESH TYPE	Unit S W M mm	Size L W M mm	Strand Width mm	Sheet Thickness mm	Mass ($\pm 10\%$) kg/m ²	Sheet Sizes (nominal) mm
GR300/WK4514	42	135	8.00	5.00	14.60	3000 x 600, 900, 1200
GR400/WK4519	45	135	11.00	5.00	19.50	2300 x 600, 900, 1200
GM450	25	75	7.50	5.00	22.00	2000 x 600, 900, 1200
AGRIMESH/FCAT	25	75	7.00	3.20	11.20	2400 x 1200
GM575/WK3028	30	75	10.50	5.00	28.10	3200 x 600, 900, 1200
WALKWAY	25	75	7.00	3.20	11.20	2400 x 1200, 600

Quick Selection Tables for Walkways:

Load	Nominal Span of Mesh - Simply Supported	
	600mm	900mm
Distributed - 2.5kPa	GR300, GM450	GR400, GM575
Distributed - 5.0kPa	GR300, GM450	-
Concentrated - 1.1kN @ 1.2mCtrs.	GR300, GM450	GR400*, GM575*

* These meshes, whilst safe for the spans shown maybe springy underfoot.

Typical Fixing Method



For more detailed information regarding Gridmesh contact your local Easysteel branch.

Manufactured Products

Expanded Metals

Product Shortname: XPM

General Information: Very similar to Gridmesh, expanded metals are also a single sheet of steel slit and expanded into a network of uniformed shaped opening.

Applications: Use opening sizes, typical applications are:

7 x 4	fireguards, display stands, anti-slip tread, hobbies
10 x 5	sump stone-guards, sculpture, anti-slip tread, paper making
15 x 5	frying baskets, anti-slip tread, tree/garden guards, rubbish bins
25 x 8	frying baskets, anti-slip tread, finger proof guards, stone guards
27 x 9	vermin control, display stands, machine guards, panels, grilles
35 x 14	grilles, cable trays, bird proofing, furniture, filter retaining, sign backgrounds
43 x 18	retaining bins, cages, shelving, agriculture, security, protection
67 x 30	security, panelling, rubbish bins, nursery/garden tables, pallets, infill panels

175 x 70 security, fencing, cages, infill panels, trellis work

When ordering, state the following information:

- mesh reference
- quantity of sheets
- sheet size
- finish required (black or galvanised)

Most meshes can also be supplied flattened. Therefore, please also state:

- Raised or Flattened

Raised Meshes - raised expanded metal is as it comes off the cutting and expanding machine. It has its strands at an angle to the plane of the sheet, adding strength and rigidity.

Flattened Meshes - flattened expanded metal is actually raised mesh flattened.

Manufactured Products

Expanded Metals

Product Shortname: XPM

Sizes Available:

Mesh Reference	Opening mm	Thickness mm	Strand mm	Sheet Size mm	Weight kg/sheet	% Open Area
10 x 6	7 x 4	0.8	1.2	1200 x 2400	7.4	60
12.5 x 6	10 x 5	1.0	1.2	1200 x 2400	9.2	60
20 x 6	15 x 5	1.0	1.7	1200 x 2400	13.0	45
30 x 12	27 x 9	1.0	1.7	1200 x 2400	6.5	71
30 x 12	27 x 9	1.0	2.5	1200 x 1800	7.2	58
30 x 12	27 x 9	1.2	2.2	1200 x 2400	10.1	65
30 x 12	27 x 9	1.6	3.0	1200 x 2400	18.4	50
40 x 18	35 x 14	1.2	2.0	1200 x 2400	6.1	78
40 x 18	35 x 14	1.6	3.0	1200 x 2400	12.3	67
50 x 24	43 x 18	1.6	2.0	1200 x 2400	6.1	83
50 x 24	43 x 18	1.6	3.0	1200 x 2400	9.2	75
50 x 24	43 x 18	2.0	3.0	1200 x 2400	11.5	75
50 x 24	43 x 18	3.0	3.5	1200 x 2400	22.0	71
75 x 36	67 x 30	2.0	3.0	1200 x 2400	7.7	83
75 x 36	67 x 30	3.0	4.0	1200 x 2400	15.4	78
200 x 75	175 x 70	3.0	7.5	1200 x 2400	15.0	80
19 x 7	14 x 5	0.8	1.0	1200 x 1200	1.8	75-80
19 x 7	14 x 4	1.0	1.7	1200 x 2400	3.7	60-73
28 x 9	22 x 7	1.0	1.5	1200 x 2400	2.7	78-89
28 x 9	20 x 6	1.6	1.6	1200 x 2400	4.4	48-56
28 x 9	19 x 5	1.6	2.2	1200 x 2400	6.2	48-56
30 x 12	24 x 10	1.0	1.5	1200 x 2400	1.9	81-87
30 x 12	23 x 9	1.2	2.2	1200 x 2400	3.3	68-78
30 x 12	23 x 9	1.6	2.2	1200 x 2400	4.4	67-75
30 x 12	22 x 9	2.0	2.2	1200 x 2400	5.5	64-71
38 x 15	31 x 14	1.0	2.0	1200 x 2400	1.8	68-74
38 x 15	30 x 13	1.6	2.0	1200 x 2400	3.3	68-78
38 x 15	29 x 12	2.0	2.7	1200 x 2400	5.1	68-74
50 x 19	40 x 20	1.6	2.1	1200 x 2400	2.3	81-87
50 x 19	40 x 18	2.0	2.7	1200 x 2400	3.8	77-81
50 x 19	37 x 16	3.0	3.9	1200 x 2400	8.3	67-74
60 x 25	50 x 21	1.6	2.2	1200 x 2400	2.2	82-87
60 x 25	48 x 19	2.0	2.8	1200 x 2400	3.5	73-80
76 x 38	62 x 28	2.0	2.9	1200 x 2400	2.7	81-84
76 x 38	62 x 28	3.0	3.5	1200 x 2400	5.0	76-81
76 x 38	60 x 25	3.0	4.5	1200 x 2400	6.7	75-79

Not all sizes available exstock. Lead times may vary.

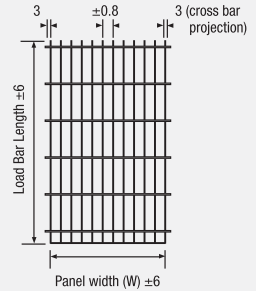
Non standard sheet sizes available.

Manufactured Products

Grating

Product Shortname: GRATE

Specifications: AS3679-250
BS4360-43A
ASTM A36



(All dimensions in mm.)

General Information:

Grating is constructed of various size load bearings with 6mm square twisted cross rods forge welded to the upper edge of the load bars. A strong forge weld is achieved by the simultaneous application of electrical current and hydraulic pressure at the intersection point of each load bar and cross rod. This process produces an open web of steel capable of supporting loads. Because of its 80% open area, grating is easy to clean, allowing for other structures to be directly added to it, and permitting free passage of light and maximum air circulation.

Availability:

Grating is manufactured in numerous combinations of load bar depth and thickness, load bar pitch and cross rod pitch.

Plain

Supplied with plain load bearing bars and 6mm twisted cross rods.

Serrated

Available with most standard load bearing bars, the serration's are formed by placing a series of notches along the upper edge of the load bar, thus enhancing the non-slip characteristics of the grating.

Finishes Available:

Untreated, black bitumen paint or galvanised

For more detailed information regarding grating contact your local Easysteel branch.

Manufactured Products

Perforated Sheet

General Information: Perforated sheet is available in the following materials -
Mild Steel
Galvanised
Electrogalvanised
Stainless Steel T304 and T316
Aluminium Alloy

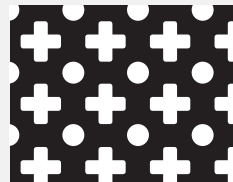
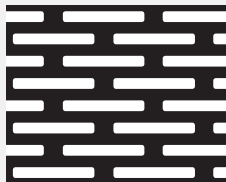
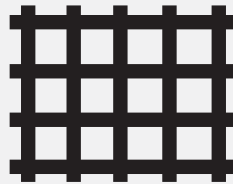
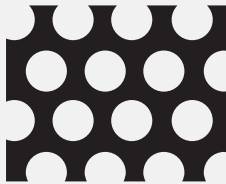
Applications: Sunscreens, balustrades, security screens, shopfitting and display, furniture, ceiling tiles, filtration, silencers, heating and ventilating, airconditioning grills, electrical components, food processing, agriculture and seed cleaning screens.

Sizes Available: Standard sheet sizes are generally 2400 x 1200 and are available in a variety of thicknesses ranging from 0.5mm to 6.0mm. Sheet thickness largely depends on the type of material and perforation pattern.

Patterns Available: Round and Square Holes, Slots, Fancy Ornamental.

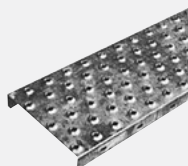
A large range of standard perforations are available ex our suppliers stock. Non-standard perforations may be manufactured to customer specification.

Sample of some available

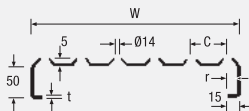


For further details contact your local Easysteel branch

Manufactured Products



Plank



NON-SLIP WALKWAY AND STAIR SYSTEM

General Information:

Plank has been designed to provide a non-skid surface and easy cleaning to meet stringent hygienic conditions.

Main Attributes:

Rigidity

Maximum strength for minimum weight with fewer supporting members required

Hygiene

Round raised studded holes prevent dirt traps, flushing away of dirt and offal is made easy

Safety

Slipping in either direction is eliminated due to the raised holes

Applications:

Catwalks, stair treads, mezzanine floors, walkways, drain covers, loading platforms, freezing works, dairy and paint factories.

Specifications:

Mild Steel Hot Rolled to AS1204-250
 Hot Dipped Galvanised to AS/NZS 4680-1999
 Stainless Steel Available in Grade 304 and Grade 316
 Aluminium AA 5251

Standard length is 3 metres

NZ REGISTERED DESIGN NO. 15577

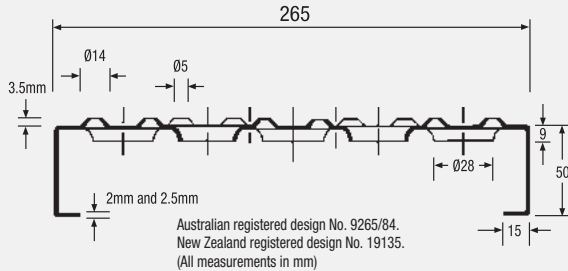
Plank Type		Mass kg/m	All dimensions in mm			
Industrial	Size (width x thickness)		W	C	r	t
Mild Steel Hdg	230w x 2.0 thk	5.4	230	56	29	2.0
Stainless Steel	230w x 2.0 thk	5.6	230	56	29	2.0
Aluminium	230w x 3.0 thk	2.7	230	56	28	3.0
Mild Steel Hdg	300w x 2.5 thk	8.1	300	47.5	28.5	2.5
Stainless Steel	300w x 2.0 thk	6.0	300	47.5	29	2.0
Aluminium	300w x 3.0 thk	3.2	300	47.5	28	3.0
Heavy Duty						
Mild Steel Hdg	300w x 3.0 thk	10.2	300	47.5	28	3.0

For further details contact your local Easysteel branch

Manufactured Products



Stud Plank



NON-SLIP WALKWAY AND STAIR SYSTEM

General Information:

Stud plank is available in standard lengths of 3 metres. Non standard lengths can be manufactured to order.

Stud plank stair treads are available in lengths of 618mm, 737mm and 916mm.

One stair tread unit consists of:-

2 end brackets; 4 coach bolts (M10 x 20);

4 flat washers; 4 spring washers; 4 nuts

Main Attributes:

Rigidity

Maximum strength for minimum weight with fewer supporting members required

Hygiene

Round raised studs and large drain holes prevent dirt traps and allow easy flushing away of dirt and offal

Safety

Slipping in either direction is eliminated due to the raised holes

Comfort

Loads are easily distributed creating a live surface to cushion workers' movements thereby reducing muscular strain, conserving energy and increasing productivity.

Applications:

For applications in mining, timber mills, oil storage, fertiliser plants, power stations etc.

Where rigidity, ease of maintenance, safety and comfort are required.

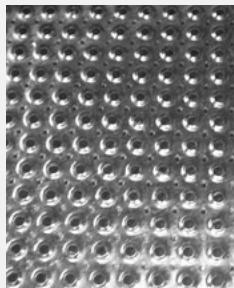
Specifications:

Materials

2.0mm mild steel to AS1204.250 in pre-galvanised to Z275 zinc coating thickness. 2.5mm mild steel to AS1204.250 in natural finish or Hot Dipped Galvanised to AS/NZS 4680-1999.

For further details contact your local Easysteel branch

Manufactured Products



Safe-T-Perf

NON-SLIP SHEETS

General Information:

SAFE-T-PERF's precise configuration, flanged circular perforation ensures a reliable non-slip surface - non-slip in all directions - even when wet and greasy. Safe-T-Perf gives confidence, minimises risk, ensures a dependable 'grip' and promotes safety. Can be made to customer requirements.

Main Attributes:

Rigidity

Maximum strength for minimum weight with fewer supporting members required

Hygiene

Round raised studded holes prevent dirt traps, flushing away of dirt and offal is made easy

Safety

Slipping in either direction is eliminated due to the raised holes

Applications:

The reliable, effective non-slip product for floors, platforms, ramps, cat-walks, stairways, vehicle steps, scaffolding and livestock transport floors. Wherever safe walking is vital.

Specifications:

Mild Steel	Hot rolled to AS1204-250
	Hot Dipped Galvanised to AS/NZS 4680-1999
Stainless Steel	Available in Grade 304 and Grade 316
Aluminium	AA 5251

Standard length is 3 metres

For further details contact your local Easysteel branch

Manufactured Products

Handrail System

Specifications: AS 1657 - 1985

General Information: The galvanised tubular handrail system is a pre-engineered system which can be transported and erected quickly and economically with a minimum of on-site work. The complete system comprises stanchions, rails, bends, kick plate and fixing bolts. Variations to standard stanchions can be custom built to your requirements.

Finishes Available: Untreated steel, stainless steel or powder coated finishes are available on request. Standard product is hot dipped galvanised to AS 1650-1989, ensuring that after installation, the monowills handrail system is maintenance-free.

Applications: It has been designed to suit New Zealand conditions and specifications and can be used anywhere railing is required on stairways, ramps, platforms, fire escapes, bridges, boats, factories, marina and farms.

For further details contact your local Easysteel branch

