

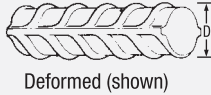
Merchant Bar



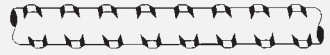
Reinforcing Rounds Deformed

Product Shortname: “DB30” - Deformed (Grade 300E) MA (Micro - Alloy)
 “DB50” - Deformed (Grade 500E) MA (Micro - Alloy)
 “RB50” - (Grade 500E) MA (Micro - Alloy)

Specifications: AS/NZS 4671:2001 - Grade 300E/500E



Deformed (shown)



REIDBAR

Standard Size Range Available:

Diameter (D) (mm)	Mass per Metre (kg/m)	Grade 300E	Grade 500E	Reid Bar (black and galv)
10	0.617	✓	✓	
12	0.888	✓	✓	✓
16	1.578	✓	✓	✓
20	2.466	✓	✓	✓
25	3.853	✓	✓	✓
32	6.313	✓	✓	✓
40	9.864		✓	

Available on indent Standard stock length in deformed bar is 6 metres. Reid bar standard stock lengths are 6 metre, 9 metre and 12 metre



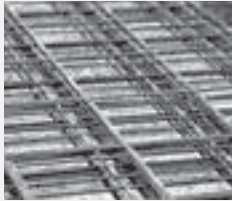
Tie Wire

Product Shortname: TIEW

Specification: 1.6mm available in 50kg coils
 2.5mm available in 50kg coils
 3.15mm available in 50kg coils

Shorter lengths in 1.6mm diameter available on request.

Merchant Bar

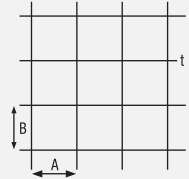


Reinforcing Mesh

Product Shortname: MESH

Specification:

Super Ductile Grade 500E (seismic) manufactured to AS/NZS 4671



Size Designation:

Space between wire 'A' (mm) x Space between wire 'B' (mm) x Gauge 't'

Size Range Available:

Super Ductile Mesh				
	Opening (A x B x t)	Sheet Size	Net Cover (m ²) approx	Gross Sheet Weight (kg)
SE62Res	200 x 200 x 6.1mm	5.05 x 2.02m	8.31	24.79
SE62	200 x 200 x 6.1mm	5.85 x 2.42m	11.93	34.10
SE72	200 x 200 x 7.0mm	5.65 x 2.22m	10.43	39.93
SE73	300 x 300 x 7.5mm	6.05 x 2.42m	11.58	14.64
SE73DE	300 x 75 x 300 x 7.5mm	5.00 x 2.27m	10.08	30.69
SE82	200 x 200 x 8.0mm	5.65 x 2.22m	10.43	52.16

Hard Drawn Mesh				
	Opening (A x B x t)	Sheet Size	Net Cover (m ²) approx	Gross Sheet Weight (kg)
10m² (nominal)				
668L	150 x 150 x 4.0mm	4.65 x 1.97m	7.52	12.44
665L	150 x 150 x 5.3mm	4.65 x 1.97m	7.52	21.85
663L	150 x 150 x 6.3mm	4.65 x 1.97m	7.52	30.87
338	75 x 75 x 4.0mm	4.65 x 2.05m	7.98	25.34
335	75 x 75 x 5.3mm	4.65 x 2.05m	7.98	44.51
333	75 x 75 x 6.3mm	4.65 x 2.05m	7.98	62.89
15m² (nominal)				
665E	150 x 150 x 5.3mm	6.15 x 2.42m	12.76	35.29
663E	150 x 150 x 6.3mm	6.15 x 2.42m	12.76	49.86
662E	150 x 150 x 7.1mm	6.15 x 2.42m	12.76	63.33
661E	150 x 150 x 7.5mm	6.15 x 2.42m	12.76	70.67
335	75 x 75 x 5.3mm	4.65 x 2.05m	7.98	44.51
Double Edge*				
84/10	300 x 50 x 300 x 5.6mm	4.95 x 2.22m	10.08	15.85
147/10	300 x 50 x 300 x 7.5mm	4.95 x 2.22m	10.08	28.36

* Note: outside wires on 84/10 is 4.0mm, and on 147/10 is 5.0mm.

SUPER DUCTILE 500E™

easysteel®
FLETCHER BUILDING COMPANY